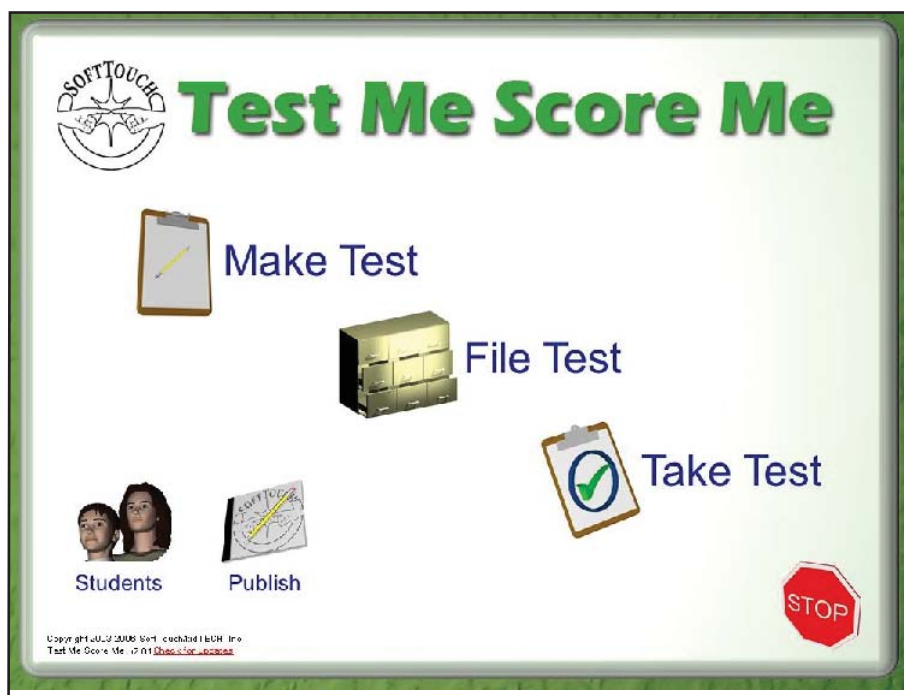


Create Your Own Accessible Tests with Test Me Score Me 2.0



Outline by
Darren Avey

I. Creating a Test

A. Select **Make Test** from Main Menu.



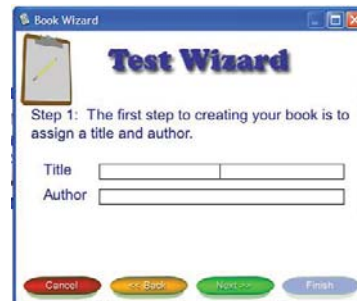
B. Choose **Add Test** from Make Test Menu.



C. Choose **Blank Book** from Book Info menu.



D. Type in Title and Author information and click **Next**.



E. Select Page Color and click **Next**.



F. Check your book page information and click **Finish**.



II. Adding Text to a page

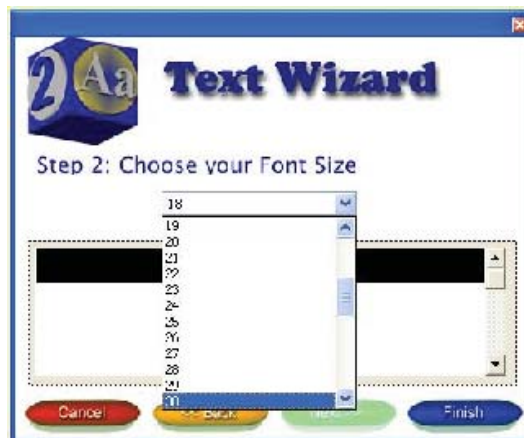
A. Click on the Blue (2 Aa) **Text tool** to open Text Wizard.



B. Type text in window that appears and click **Next**.



C. Choose Font size you prefer.

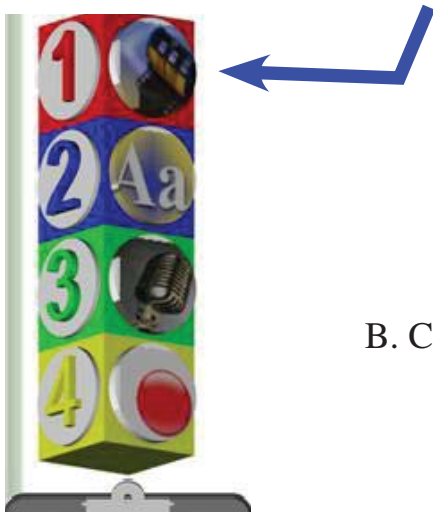


Click **Finish**.

C

III. Adding pictures to a page.

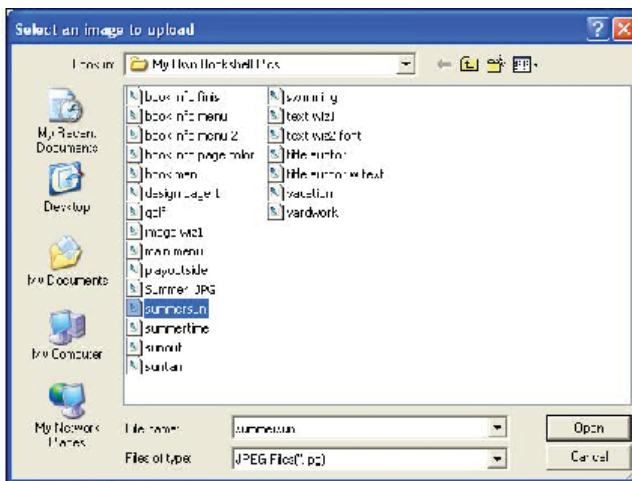
A. Click on the **Red (1)** Movie and Image button.



B. Click on **Find Image**.



C. Choose the image from the My Own Bookshelf library or other locations on your hard drive.



D. Move the slider to resize image if desired then click **Finish**.



IV. Adding sound to a page.

A. Click on the **green (3)** microphone on the toolbar.



B. Click on **Background Sound**



C. Click on either **Record Sound** or Select for File or Text to Speech

D. For this example we will choose **Record Sound**.



E. Use the Start Stop buttons to make recording.

F. Click Finish.



V. Adding Text to Speech to a page.

A. Click on the **green (3)** microphone on the toolbar.



B. Click on **Text Sound**



C. Click on either Record Sound or Select for File or **Text to Speech**

D. For this example we will choose **Text to Speech**



E. Type in the text you wish to be spoken or text on page will be spoken.

F. Click Finish.



V. Inserting Correct and Incorrect Answers

A. Click on the green check mark and drag it to the correct answer picture or text field.

The screenshot shows a web interface for creating tests. At the top left, it says "Test Me Score Me Make Test" in green. To the right, it says "Design Your Question" and "adsf". In the top right corner, there is a "Finish" button, "Page 1", and two navigation arrows (red left, green right). Below the header, the question "Who is the hero of this story?" is displayed. There are two answer options: "Superman" with a picture of the superhero, and "Lex Luthor" with a picture of a man in a suit. A red arrow originates from a green checkmark icon in the top right and points to a smaller green checkmark icon overlaid on the Superman image.

B. Click on the red no mark and drag it to the incorrect answer picture or text field.

This screenshot is similar to the one above, showing the same question and answer options. However, a red arrow originates from a red "no" icon (a circle with a diagonal line) in the top right and points to a smaller red "no" icon overlaid on the Lex Luthor image.